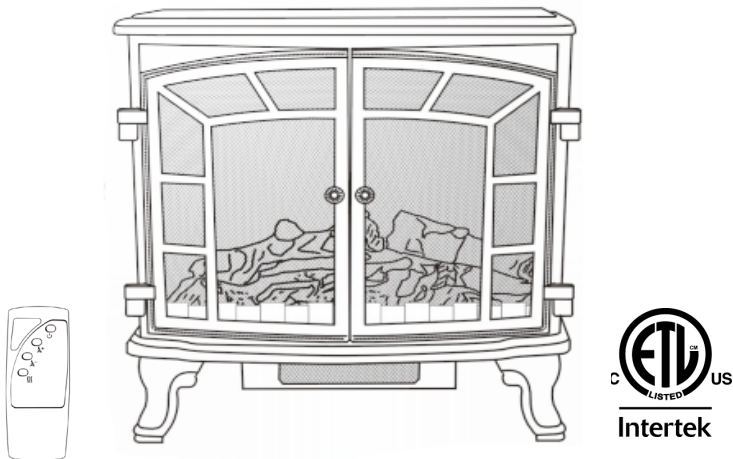


DELLA®

**WARNING: READ THIS INSTRUCTION MANUAL CAREFULLY BEFORE USE.
www.dellaproductsusa.com 909.344.2588

1500W STOVE HEATER



INSTRUCTION MANUAL

Item No: 050-HA-50096

Thank you for choosing a DELLA Infrared Zone Heating System. This owner’s manual will provide you with valuable information necessary for the proper care and maintenance of your new product. Please take a few moments to thoroughly read the instructions and familiarize yourself with all the operational aspects of your new heater.

PLEASE LIKE, COMMENT AND SUBSCRIBE



TABLE OF CONTENT

IMPORTANT INSTRUCTIONS	03
SPECIFICATIONS	04
SAFETY	04
INSTALLATION	05
MAINTENANCE	06
WARRANTY	07

IMPORTANT INSTRUCTIONS

When using this electric unit, basic safety precautions should always be followed to reduce the risk of fire, electric shock, and injury to persons, including the following:

01. Read ALL instructions before using this unit.
02. CAUTION: Risk of Electric Shock. DO NOT open or try to repair the heater yourself.
03. This heater may get hot when in use. To avoid burns, DO NOT let bare skin touch hot surfaces. If provided, use handles when moving this heater.
04. Keep combustible materials, such as furniture, pillows, bedding, paper, clothes, and curtains at least 3 ft from the front of the heater and keep them away from the sides, top, and rear. DO NOT place towels or other objects on the heater.
05. Extreme caution is necessary when any heater is used by or near children or the disabled, or when the heater is left operating and unattended.
06. DO NOT operate any heater with a damaged cord or after the heater malfunctions, has been dropped or damaged in any manner. Return heater to authorized service facility for examination, electrical or mechanical adjustment, or repair.
07. This heater is not intended for use in bathrooms, laundry areas and similar indoor locations. NEVER locate heater where it may fall into a bathtub or other water container. To protect against electrical hazards, DO NOT immerse in water or other liquids.
08. DO NOT touch the control panel or plug with a wet hand.
09. DO NOT run cord under carpeting. DO NOT cover cord with throw rugs, runners, or similar coverings. Arrange cord away from traffic area and where it will not be tripped over.
10. DO NOT insert or allow foreign objects to enter any ventilation or exhaust opening as this may cause an electric shock or fire, or damage the heater.
11. To prevent a possible fire, DO NOT block the air intakes or exhaust in any manner. DO NOT use on soft surfaces, like a bed, where openings may become blocked.
12. A heater has hot and arcing or sparking parts inside. DO NOT use in areas where gasoline, paint, explosive and/or flammable liquids are used or stored. Keep unit away from heated surfaces and open flames.
13. Always plug heaters directly into a wall outlet/receptacle. Never use with an extension cord or relocatable power tap (outlet/power strip).
14. To avoid fire or shock hazard, plug the unit directly into a 120 V AC electrical outlet.
15. To disconnect heater, turn controls to OFF, then remove plug from outlet. Pull firmly on the plug, DO NOT unplug by pulling on the cord.
16. Always unplug the unit before moving or cleaning, or whenever the heater is not in use.

IMPORTANT INSTRUCTIONS

17. Use only for intended household use as described in this manual. Any other use not recommended by the manufacturer may cause fire, electric shock, or injury to persons. The use of attachments not recommended or sold by unauthorized dealers may cause hazards.
18. Always use on a dry, level surface. Use on floor only.
19. DO NOT use outdoors.
20. WARNING: To reduce the risk of fire or electric shock, DO NOT use this unit with any solid-state speed control device.
21. DO NOT attempt to repair or adjust any electrical or mechanical functions on this unit. Doing so will void your warranty. The inside of the unit contains no user serviceable parts. Qualified personnel should perform all servicing only.
22. Connect to properly grounded outlets only.
23. Save these instructions.

SPECIFICATIONS

Voltage Rating	120 V (60Hz)
Power Consumption	1500W
Unit Size	27.36" x 14.17" x 25.98"
Unit Weight	18.73 lbs

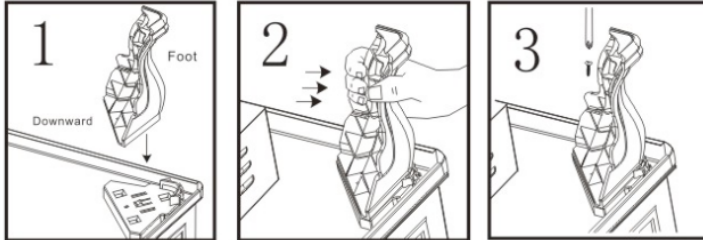
SAFETY FEATURE

This heater is equipped with an overheat safety feature. When the heater's internal components reach a certain temperature that could cause overheating and possible fire, the heater will automatically shut off.

WARNING: It is normal for the power cord to feel warm to the touch; however, a loose fit between the outlet and the plug may cause overheating of the plug. If this occurs, try inserting the plug into a different outlet. Contact a qualified electrician to inspect the original outlet for damage.

INSTALLATION




Take out the whole machine, and put it on the flat table in order to avoid machine scratching, then take the feet out of the plastic bag and connector (as shown in the picture)




(The foot installation diagram)

DIRECTION FOR USING

01. START AND SELECT WORKING MODE

 Power	<p>Turn the heater on by pressing the ON/OFF button on the rear of heater.</p> <p>Pressing button on the control panel or by pressing the Power button on the supplied remote control.</p> <p>Once power is off, heating element will stop working</p>
 Heater	<p>Select a heat setting.</p> <p>Press the HEATER button to toggle between the two heat settings.</p>
	<p>Power for heat-HIGH mode is 1500W; heat-LOW is 750W,and turn off the heat.</p>

02. SETTING FLAME

	<p>Adjust the brightness of the flame and turn off</p>
---	--

MAINTENANCE

01. Turn off the power switch in the rear of the unit.
02. Unplug the unit and let it cool completely.
03. To keep the heater clean, the outer shell may be cleaned with a soft, damp cloth. You may use a mild detergent if necessary. After cleaning, dry the unit with a soft cloth. CAUTION: DO NOT let liquid enter the heater.
04. DO NOT use alcohol, gasoline, abrasive powders, furniture polish, or rough brushes to clean the heater. This may cause damage or deterioration to the surface of the heater.
05. DO NOT immerse the heater in water.
06. Wait until the unit is completely dry before use.

LIMITED TERM WARRANTY

ONE (1) YEAR FROM DATE OF PURCHASE

WARRANTY TERMS

DELLA warrants that its merchandise are free from manufacturing defects (workmanship and/or material) and will either give credit or replace defective parts for a period of up to one (1) year from the date of purchase in accordance with the conditions set forth below. If a manufacturing defect is found, DELLA should be notified promptly of the defect and supplied a copy of the invoice and delivery ticket. Inspection by a DELLA employee or representative may be necessary to verify that a manufacturing defect exists, or you may be required to submit samples to DELLA along with a digital image of the defects. If replacement is required in accordance with this warranty and the defective material or merchandise has been discontinued or unavailable, DELLA reserves the right to select and supply similar merchandise or offer full credit for the merchandise; otherwise the same material or merchandise will be supplied for replacement purposes. This warranty is made solely to the retailer and is not transferable under any circumstances. It is the retailer's responsibility to contact DELLA with a claim. We will not handle claims from consumers directly; all requests must go through the retailer who sold the merchandise to the consumer. We advise all retailers to retain invoices for a minimum of one (1) year for warranty purposes. This warranty supersedes and replaces all implied warranties of merchantability and use for particular purpose. No representative, employee, or agent of DELLA or any other person is authorized to assume for DELLA any additional liability or responsibility in connection with DELLAs merchandise except as described above. Implied warranties or merchantability and fitness of the merchandise are limited to a period of one (1) year from the date of purchase. In no event shall DELLA be liable for indirect, consequential or incidental damages of any kind.

ADDITIONAL CONDITIONS

The following examples are not manufacturer's defects:

- Colors may vary slightly from the photo because of photography and printing tolerances.
- Sizes are stated in U.S. standard measurements while the actual sizes are manufactured using the metric system. Therefore the sizes may vary slightly.
- There are no exchanges or refunds on any pillows or toppers sold.
- No returns for buyer's remorse.
- * No returns - other than stated above - will be accepted

ADDITIONAL CONDITIONS

Warranty is void for any of the following conditions:

- 1 Improper maintenance or improper use resulting in damage.
- 2 Any product modifications by dealer, consumer, or other parties not authorized by DELLA will void this warranty.
- 3 Floor samples sold or products designated "AS IS" at the time of purchase are not covered by the warranty.
- 4 Warranty does not cover minor variations or differences between floor samples or printed illustrations and your furniture.
- 5 Cost of packaging and shipping to and from DELLA is not covered by the warranty unless expressly arranged by DELLA.
- 6 This warranty covers only articles of appliances intended for residential use only, does not cover any industrial, commercial, institutional, or rental use.
- 7 Dissatisfaction due to buyer's remorse.
- 8 Normal wear and tear.
- 9 Damages incurred during transportation.
- 10 Damages incurred during assembling or maintenance.
- 11 Damages incurred by accidents or abuse.

Additional conditions for warranty on upholstery are listed on the attached addendum.

DELLA[®]

**WARNING: READ THIS INSTRUCTION MANUAL CAREFULLY BEFORE USE.
www.dellaproductsusa.com 909.344.2588
